



100s of FREE adult learning courses available
visit www.durham.gov.uk/durhamlearn



Our Supported Employment Pathway -

*** Get Into! (*Traineeship*)**

*** Supported Internship**

*** Future Focus**





100s of FREE adult learning courses available
visit www.durham.gov.uk/durhamlearn



- DurhamLearn's Supported Employment Pathway is primarily employment driven and intended for learners who are focused on gaining work – in a paid or voluntary capacity.
- Our specific programmes can be accessed by learners as individual 'development' years or used as 'stepping stones' to grow and develop employability skills over a number of years.
- Our groups are deliberately small and delivery is in community settings, ensuring that independence and travel work is highly relevant and personalised to them.
- Learners follow an individual curriculum, developed to address the specific needs of each, using a prioritised, small steps programme that will motivate and ensure progression towards employment, volunteering or onto an apprenticeship.

Our Future Focus Programmes

Learners are supported and encouraged make realistic choices about their future employment and living preferences as they prepare for adulthood - following the key themes of **employment, independent living, good health, community inclusion and relationships.**



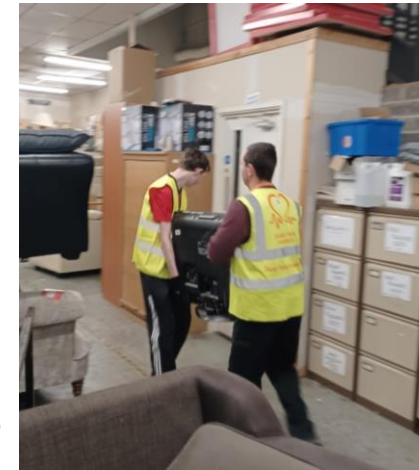
What we do:

Future Focus is a full time study programme (3 days pw, 35wks). All learners have a personalised programme which includes study of English, maths and IT – it may also include other qualifications to assist learners in gaining their desired employment.



As part of their programme, we also introduce our young people to the world of work by encouraging them to take part in work experience and learn more about their skills.

Also within the programme are a variety of enrichment activities, chosen to aid the improvement communication skills, build learner confidence and self esteem. Activities that promote keeping safe in the community and online are particularly prominent and relevant guest speakers are regularly invited in to work with groups.



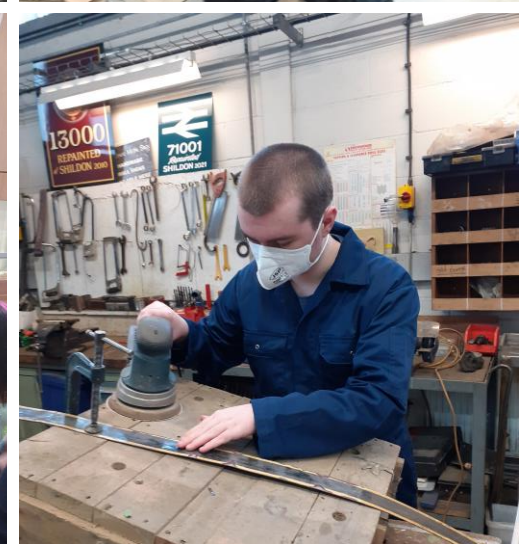
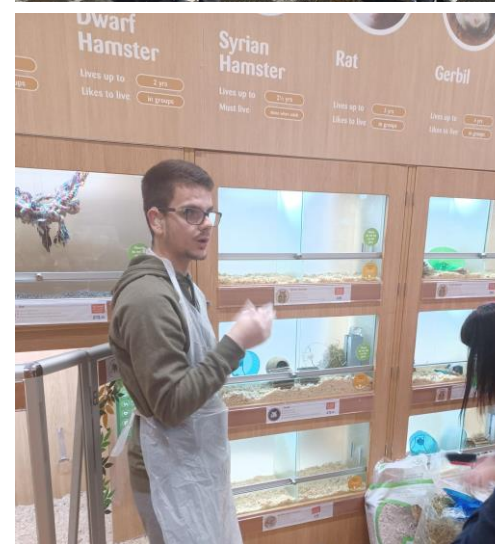
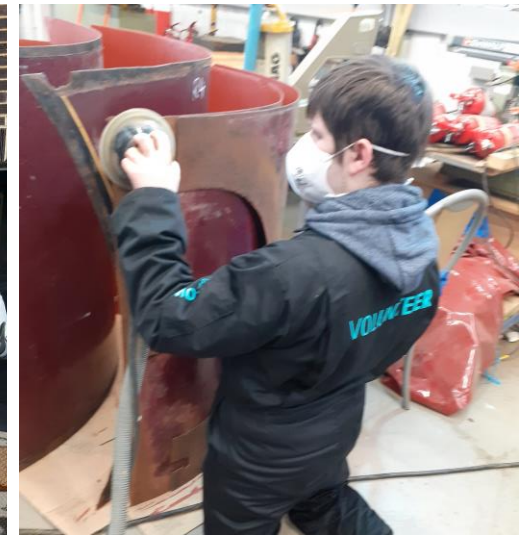
Future Focus is a full time study programme available to young people with SEND or LLDD who are interested in gaining employment skills, ideally aged 18-24 years & working at minimum Entry level 2 in English and maths (or equivalent).

How to apply?

All queries to : CYPSSSEND@durham.gov.uk

First steps into the world of work

- The National Railway Museum, 'Locomotion' project
- British Heart Foundation warehouse
- Refuse Café
- Pets at Home
- Washington Riding Centre
- Care homes
- North East Autism Society
- Durham County Council Library - Crook
- DurhamLearn IT Support Team
- Klassy Dog – dog groomers
- Durham County Council Historic Environmental Records team



Our Supported Internship

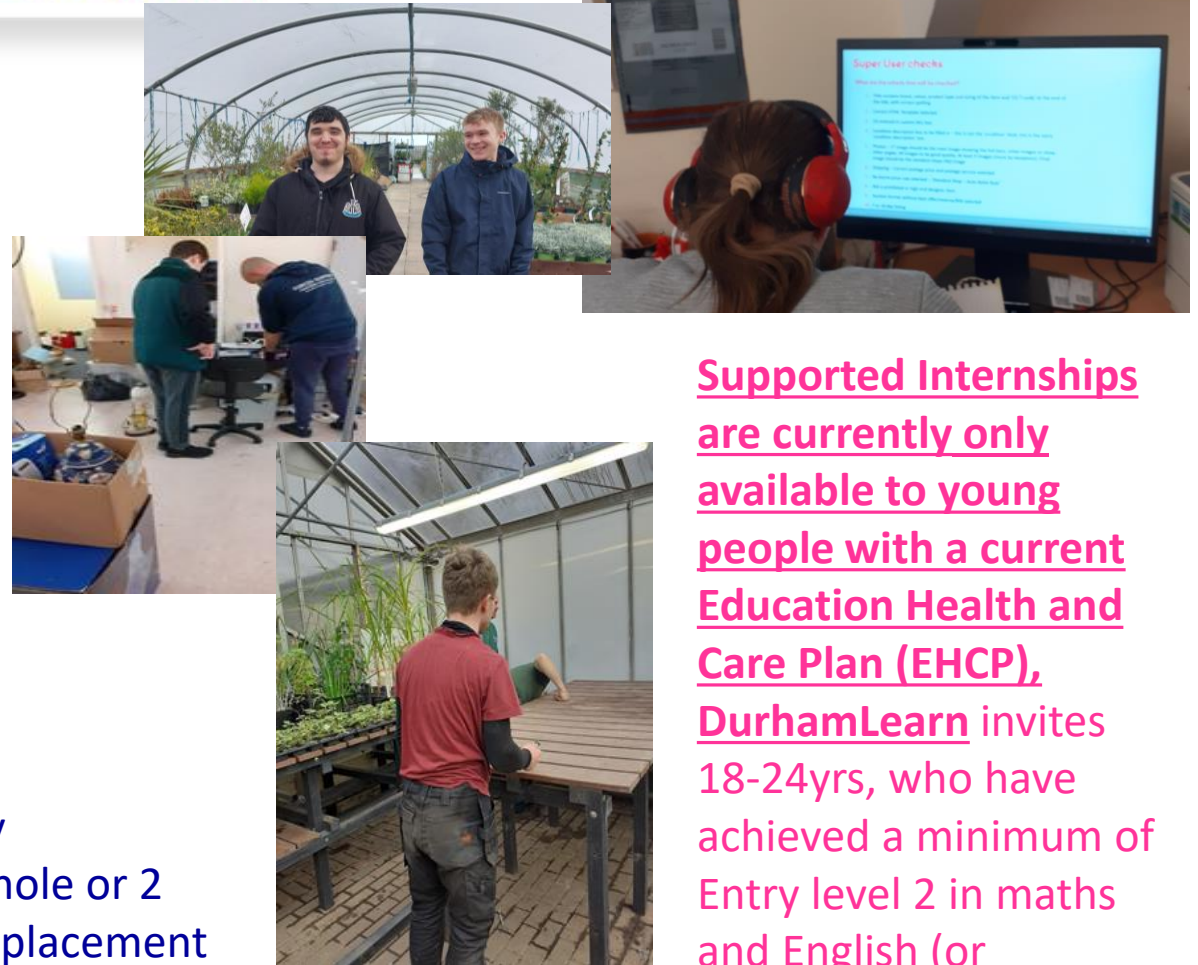


Our main aim is to assist learners into sustainable, paid employment or volunteering. All Interns take part in workplacements, whilst also engaging in English and maths studies at levels appropriate to them – this may be alongside any other beneficial, vocationally relevant qualification that will help them gain their desired employment. Programmes are individual to the learner - designed and informed by thorough initial assessments which include vocational profiling and independence assessment. Job matching and preparation activities are undertaken with job coaches - who ensure that Interns are fully supported to make their first steps into the workplace ... and then step back as confidence and proficiency grows.

What does it look like?



A Supported Internship is a full time study programme (35wks). Learners attend 1 whole or 2 half, study days per week and 16hrs work placement (adaptable to the individual). To highlight : learners' work placements continue through school holidays unless they book holidays with their individual employers.



Supported Internships are currently only available to young people with a current Education Health and Care Plan (EHCP), DurhamLearn invites 18-24yrs, who have achieved a minimum of Entry level 2 in maths and English (or equivalent) to apply.

How to apply?

All queries to :
CYPSSALSSSEND@durham.gov.uk

GET INTO is a employment skills development programme for 16-24yr olds, with or without SEND/ additional needs and includes a significant work placement.

Learners will learn to master the crucial skills that employers look for in apprentices and potential future employees.

Content is personalised and may include soft skills, such as organisation and communication, as well as qualifications in literacy, numeracy and Essential Digital Skills. We provide support with CV writing, assistance with filling out application forms and interview preparation.

We can also help with preparations for further study and/or work schemes.

Learners applying for GET INTO should be working at minimum Entry level 3 in maths and English (or equivalent) and can have up to L3 qualifications.

{Learners are not required to have an EHCP for Get Into}

Previous learners have gained employment in

Childcare



Retail



Equine Care



How to apply?

All queries to : CYPSSALSSSEND@durham.gov.uk