

# County Durham and Darlington Needs Led Neurodevelopmental Pathway

Rachael Allen, Team Manager Tees, Esk & Wear Valleys NHS FT



## What do we mean by “Neurodevelopmental”?

- Lifelong
- Difficulties including:  
Cognition, language, motor development, attention and concentration, emotional regulation, social communication and social interaction
- Evidence that neurodevelopmental conditions co-occur
- Two of the most common Neurodevelopmental conditions are ADHD and Autism





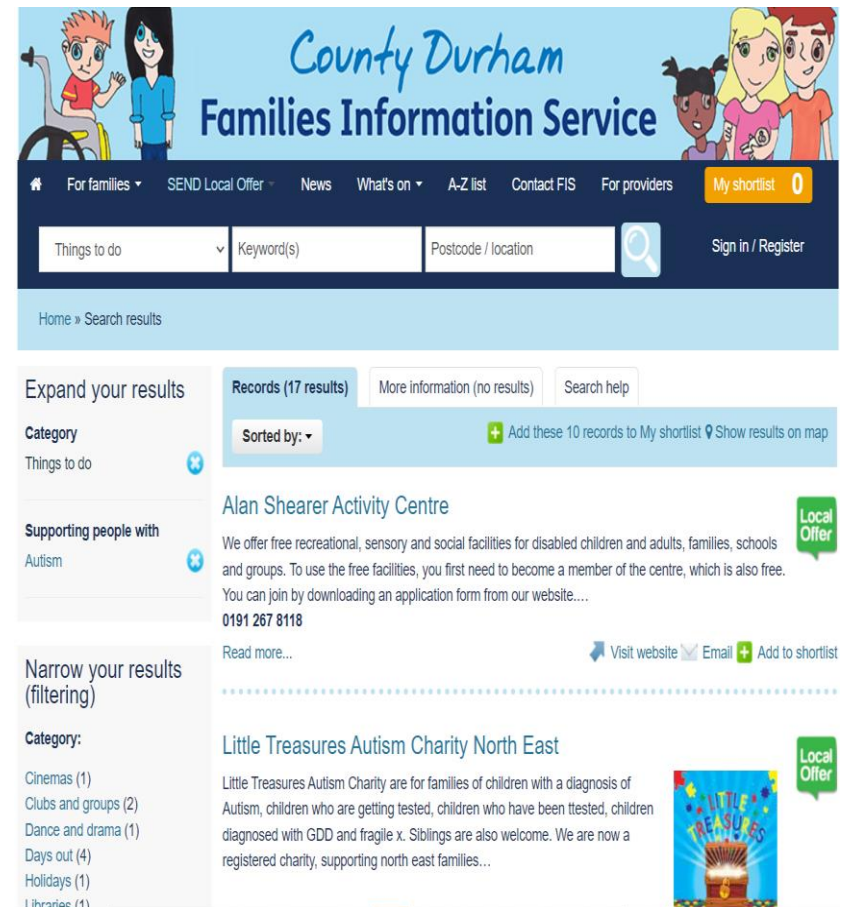
## Why “Needs Led”?

- Parents highlighted the importance of needs being met, regardless of diagnosis
- Confusion over what services were available without diagnosis
- Importance of a culture change across the system away from diagnosis

## Needs Led 'Offer'

- Information brought together for the local area
- Some additional funding available to minimise 'gaps' identified
- Emphasis on support and advice being available regardless of diagnosis

[County Durham's Families Information Service | Search results](https://www.countydurhamfamilies.info)  
[\(countydurhamfamilies.info\)](https://www.countydurhamfamilies.info)



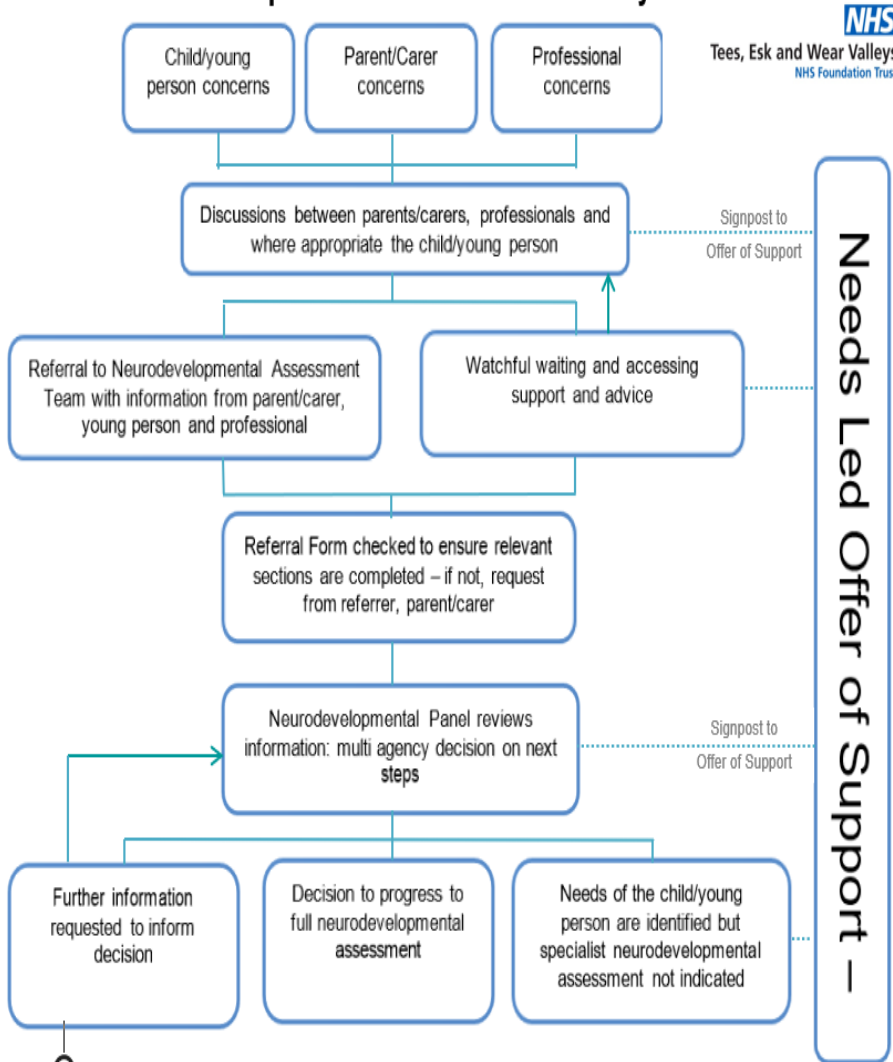
The screenshot shows the website's search results for 'Things to do'. The header includes the service name and navigation links. The search bar shows 'Things to do' selected. The results list includes:

- Alan Shearer Activity Centre** (Local Offer): We offer free recreational, sensory and social facilities for disabled children and adults, families, schools and groups. To use the free facilities, you first need to become a member of the centre, which is also free. You can join by downloading an application form from our website.... 0191 267 8118
- Little Treasures Autism Charity North East** (Local Offer): Little Treasures Autism Charity are for families of children with a diagnosis of Autism, children who are getting tested, children who have been tested, children diagnosed with GDD and fragile x. Siblings are also welcome. We are now a registered charity, supporting north east families...

Navigation and filtering options include: Home, Search results, Expand your results, Records (17 results), More information (no results), Search help, Sorted by, Add these 10 records to My shortlist, Show results on map, Category (Things to do), Supporting people with (Autism), Narrow your results (filtering), Category (Cinemas (1), Clubs and groups (2), Dance and drama (1), Days out (4), Holidays (1), Libraries (1)), Visit website, Email, Add to shortlist.



## Neurodevelopmental Assessment Pathway

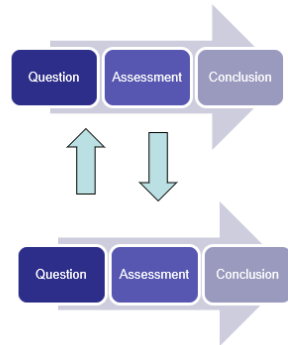


## County Durham Needs Led Pathway

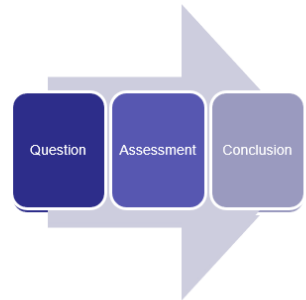
## Neurodevelopmental Assessment Team

- TEWV service
- Brings together previous Autism and ADHD assessment pathways

**Separate pathways**



**One pathway**



- ICB investment to increase capacity to meet increased demand/reduce waiting lists



## ICB Hosted Webpage

[Needs Led Neurodevelopmental Pathway | North East and North Cumbria NHS \(northeastnorthcumbria.nhs.uk\)](https://northeastnorthcumbria.nhs.uk)

The screenshot shows the NHS North East and North Cumbria website. The navigation menu includes: About, Our work, Integrated Care Partnership, Staff wellbeing hub, Get involved, and News. The main content area has a dark blue header with the text 'Needs Led Neurodevelopmental Pathway'. Below this, a paragraph states: 'This page provides more information for young people, families and professionals about our needs led approach, the assessment diagnostic process and the support available before, during and after assessment.' At the bottom, there is a list of four categories, each with a downward arrow: Darlington, Hartlepool and Stockton-On-Tees, South Tees, and County Durham.

**NHS**  
North East and  
North Cumbria

About ▾ Our work ▾ Integrated Care Partnership Staff wellbeing hub Get involved ▾ News ▾

Q

### Needs Led Neurodevelopmental Pathway

This page provides more information for young people, families and professionals about our needs led approach, the assessment diagnostic process and the support available before, during and after assessment.

- Darlington ▾
- Hartlepool and Stockton-On-Tees ▾
- South Tees ▾
- County Durham ▾

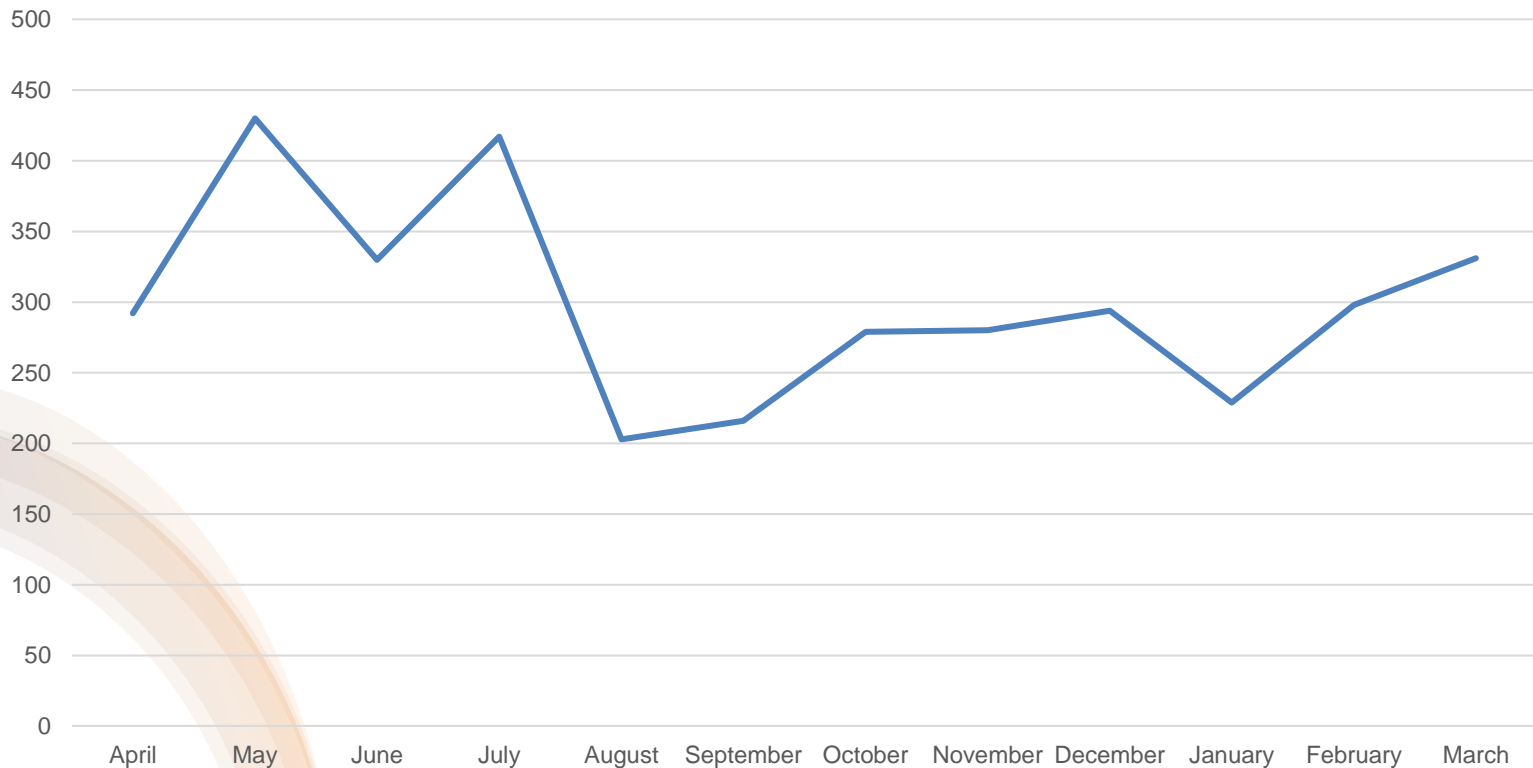
## Challenges we are facing

- Increased referral numbers
- Additional referral screening and discussion
- Increased demand for responding to queries from professionals and families
- Development of a NICE compliant standardised single assessment pathway
- Retention and recruitment of highly skilled clinicians – those who can diagnose autism/ADHD



# Referrals into the Service

Referrals into Neurodevelopmental Assessment Team



## Assessment Process

- Initial appointment with family and young person
  - Background information
  - Clinical impression
- School information
- Assessment planning meeting
- Assessment appointments
  - Developmental history (1, 2 or more appointments)
  - Additional observations
  - Standardised assessments
  - Information gathering from other agencies (social care, mental health, health)

## Key Worker Model

### Aims

- To keep the child and family at the centre of the assessment
- To be confident that the information we are using in our decision making is current and accurate
- To reduce families having to retell their story
- To use standardised paperwork
- To reduce the number of appointments needed to make a decision
- Ensure we are following a NICE compliant process
- To streamline the process, and cut out unnecessary steps and assessment for the young person
- Early indications suggest that this has a benefit for YP, family and staff

## What we are working on

- Recruitment and retention of staff
- Professional hotline
- Choice of clinic for assessments

County Durham

**Care Partnership**



Further information / queries?

[Rachael.allen13@nhs.net](mailto:Rachael.allen13@nhs.net)