



# MCT Durham PCF Conference 1<sup>st</sup> May 2024

- Access to Positive Activities for children with SEND.
- Short Breaks for parent carers

**Presenter:**

**Lyndsey Dunn  
Commissioning, Planning and  
Policy Officer**

Pathway to access positive activities and/ or short breaks

- **Access a positive community activity**
- **Carers need a short break from caring**

Understand needs of families and provide **advice, guidance and signposting** to help access

Children experiencing barriers to accessing the local community activities

Carers unable to have a short break from caring

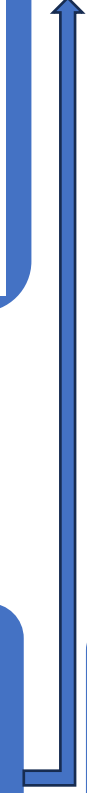
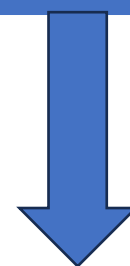
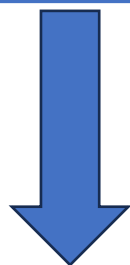
Identify Solutions to enable needs to be met


Unable to remove barriers and identify a solution within existing universal offer/ networks

Develop response to gaps for families with additional support


require a higher level of support in response to their complexities or a greater volume of support in line with needs

Assessment to determine needs and level of support required





Some professionals you may be working with who can help you to access this pathway of support

- ▶ Durham County Carers Support
  - ▶ Family Hubs
  - ▶ One Point
  - ▶ Families First Team
  - ▶ Families First Disability Team
  - ▶ Schools and colleges
  - ▶ Alternative Provision
  - ▶ Voluntary and Community Sector providers
- 



To view the short break offer, search for the Short Breaks Statement Durham.gov.uk/shortbreaks



Home / Residents / Schools & Learning / Special educational needs and disabilities (SEND) and our Local Offer / Special educational needs and disabilities (SEND) - Advice and support / Short breaks (respite care)

## Short breaks (respite care)

Being a parent carer of a child or young person with special educational needs and or disabilities (SEND) we know can be difficult, and you may need some time to help you cope with family life. Short breaks are designed to help you have a break from your caring responsibilities.

**i** We are keeping our short breaks under review in line with guidance and needs of families. [Contact us](#) to share your views with us.



[Short Breaks transcript \(PDF\), \[99KB\]](#)

Short breaks are different for every family. They will depend on your family's needs, but may include: ... support from your network, your friends, family and people who are involved with your family

### Short breaks solutions

@ [sendelc@durham.gov.uk](mailto:sendelc@durham.gov.uk)  
☎ [03000 260 270](tel:03000260270)

### Document downloads

 [Short Breaks Statement \(PDF\) \[2MB\]](#) [↗](#)

### Related information

- Park House
- Learning disability services
- Special educational needs and disabilities (SEND) and our Local Offer
- Special educational needs and disabilities (SEND) - Advice and support

### Offsite links

- [Durham Area Disability Leisure Group \(DADLG\)](#)
- [Integrating Children Sport Works](#)
- [Durham County Carers: carers breaks](#)
- [Durham Carers Infopoint](#)

Scroll down and click on attachment for the full short breaks statement which is refreshed and kept up to date

## How do we know what parent carers need?

The Children and Young Peoples Network is Durham's Children's Disability Register. We use information from the register to engage with families and find out whether their needs are being met, the impact of the offer in allowing short breaks and if there are any gaps in meeting needs or changes we need to make.

So, please make sure you are registered.

The [Short Breaks Statement \(PDF\), \[2MB\]](#) will provide you with more detailed information on the short breaks offer in County Durham, any eligibility and how this can be accessed.



The offer is split into 3 main parts

**A – Advice, signposting and enabling access**

**B – Additional Support**

**C – Specialist Support**

# SEND POPULATION

..... children and young people with SEND in  
County Durham.

The largest  
proportion of the  
SEND population  
should be able to  
have their own  
needs met within  
the community  
offer

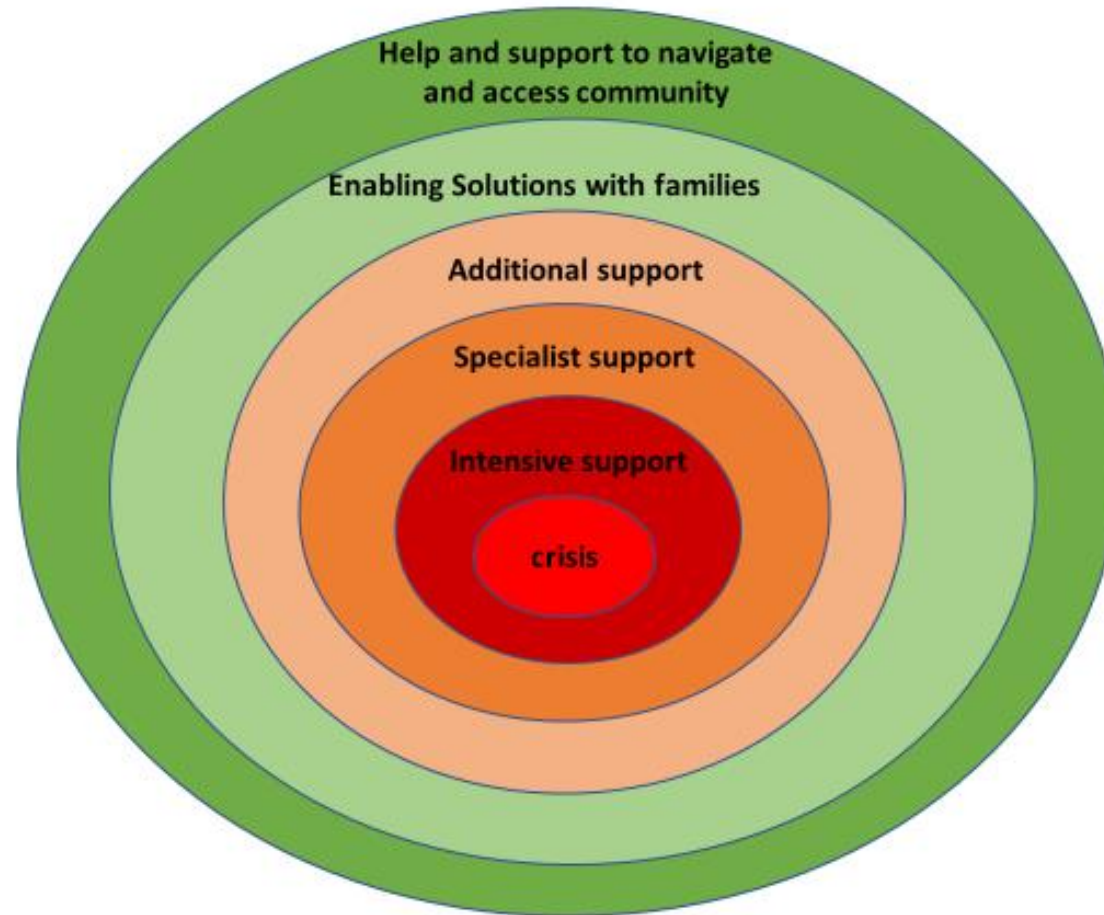
A proportion of the  
population will not be  
able to meet their needs  
in the existing offer and  
will require some  
adapted and additional  
support

A small number of the  
population is very complex  
and will require tailored  
and specialist support  
following a social care  
statutory assessment

An even smaller number will  
hit crisis we hope

How this support looks – as a visual

Diagram 1





# How do we capture this information on needs to help us understand

## CREATED A SINGLE POINT OF CONTACT

We have introduced a single point of contact for families and professionals through the creation of SEND Empowering Inclusive Communities (SENDEIC) Team.



## DEVELOPED A NEW DATABASE

We have established a central database to capture needs, barriers and gaps in provision when contacted by families and professionals.



## GATHER ONGOING WIDER INFORMATION

The team also gather wider intelligence through speaking to a range of partners, networking, attending events and being out their gathering information



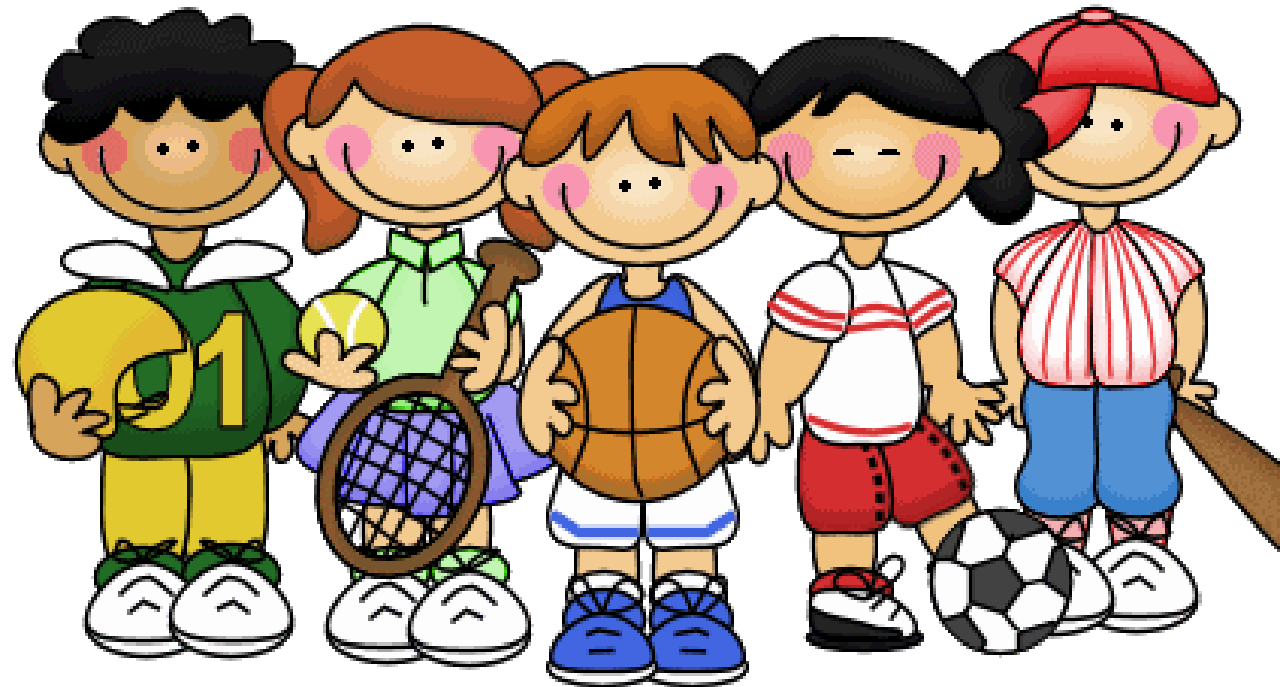




## SEND EMPOWERING INCLUSIVE COMMUNITIES (SENDEIC)

**Danielle Pope, SEND Empowering Inclusive Communities (SENDEIC) Officer**

First point of contact for families and professionals seeking information on community activities available for children with additional needs she will work to consider solutions and available options.



# How do we understand what community activities are out there and available for our SEND population to access?

---

- Work closely with VCS Alliance in County Durham.
- Developed linked through social media with wider social media groups and activities.
- Online research
- Local research speaking with community venues, facilities, existing groups and gather information.
- Work with families through surveys and conferences to gather information on what is out there.
- Social media contributions for others to share SEND activities.
- Developing a map of existing provision and categorising types of activities.
- Developed strong relationships with providers to keep up to date with new developments
- Introduced Provider engagement sessions
- Links with multi-agencies to share their knowledge.



# SEND EMPOWERING INCLUSIVE COMMUNITIES (SENDEIC)

**Ruth Pope, SEND Empowering Inclusive Communities (SENDEIC) Co-Ordinator**

Will work with families, providers and professionals experiencing any barriers accessing the community activities to develop solutions to remove these barriers wherever possible.







Some examples of the work so far linked to barriers and solutions

- ❑ Issues grants for local groups to expand existing sessions to be more inclusive
- ❑ Issued grants to help develop new SEND sessions
- ❑ Additional Staff training in SEND
- ❑ Funding equipment - e.g. changing bench.
- ❑ Funded additional staff members where children require higher levels of supervision and support.
- ❑ Developed SEND sessions into some of the Family hub on evenings
- ❑ Personilisation Grants
- ❑ Helped with additional room hire and sensory spaces
- ❑ Funded additional sensory gardens and outdoor spaces
- ❑ Working together with providers to help attract additional funding

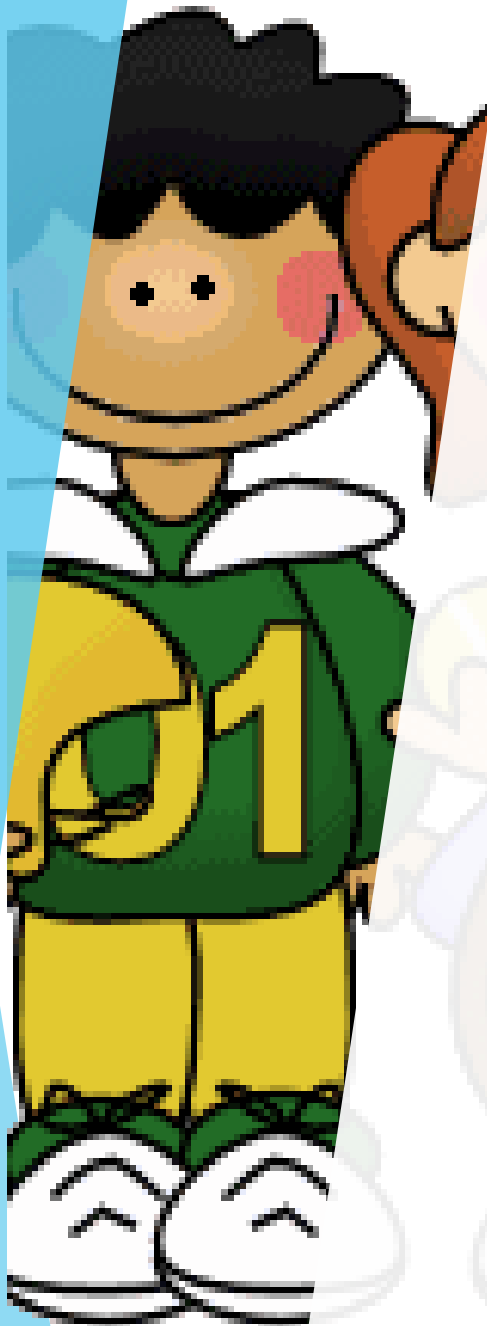




**We want our children to be able to live the best lives possible and have the same opportunities as all children with the additional support they may need.**

**We need to do more working together to transform our communities to be more inclusive for children with a range of additional needs and their families.**

**Using the barriers shared by families a model has been developed which will be driven through an empowering approach against each barrier to deliver transformation and maximise inclusion for those with additional needs in their community**



Empowering  
Inclusive  
Community  
Travel

Empowering  
Community  
Activity  
Providers

Empowering  
children and  
young  
people with  
SEND

**SEND  
Empowering  
Inclusive  
Communities**

Empowering  
Inclusive  
wider  
Community  
Cultures

Empowering  
parent  
carers

Empowering  
Inclusive  
Community  
Facilities



We need parent and carers to work with us as part of this transformation

## How can you be involved?

- Share with us the impact of positive activities and short breaks have had on you. Take part and agree to do a short video and win an amazon voucher.
- Nominate yourself to be part of one of our local SEND Empowering Inclusive Communities - Task Groups for parent/ carers. Either in person, or part of a network.
- Contribute your ideas through surveys, e-mails and telephone calls.
- Support your child to be part of one of our SEND Empowering Inclusive Communities - Task Groups for children with SEND
- Support your child to be part of one of our SEND Empowering Inclusive Communities - Task Groups for children without SEND, siblings and the wider population
- Encourage your local providers to join up and be part of the SEND provider clusters across County Durham.

E-mail [SENDEIC@durham.gov.uk](mailto:SENDEIC@durham.gov.uk)

Visit the facebook page or message via facebook SEND Empowering Inclusive Communities

Telephone 03000 260 270