

# Developing a New SEND Strategy for Co Durham

Making Changes Together  
Parent Conference May 2021

# Developing the SEND Strategy

Our existing strategy requires revision

We want to develop a strategy that:

- informs and supports our activity, and in turn is informed and supported by what we do
- enables us to understand when we are making progress
- helps to identify what else we need to do

The Strategy should make sense for:

- Children and young people
- Families
- Schools and settings
- The Strategy and Partnership
- Services and teams
- Individual practitioners

# What sources have we drawn on ....

- The legislative framework
- Durham County Council context and other strategies
- HNB Consultation
- High needs review
- Autism Review
- Health Needs Assessment
- Ofsted inspection and revisit
- etc

# SEND Strategy Vision

Our Vision for children and young people with special educational needs and disabilities is the same as it is for all children and young people in County Durham: That they are safe and part of their community, have the best start in life, have good physical and mental health, and gain the education, skills and experiences to prepare them for adulthood



Please use your phone, or browser and visit

[www.sli.do](http://www.sli.do)

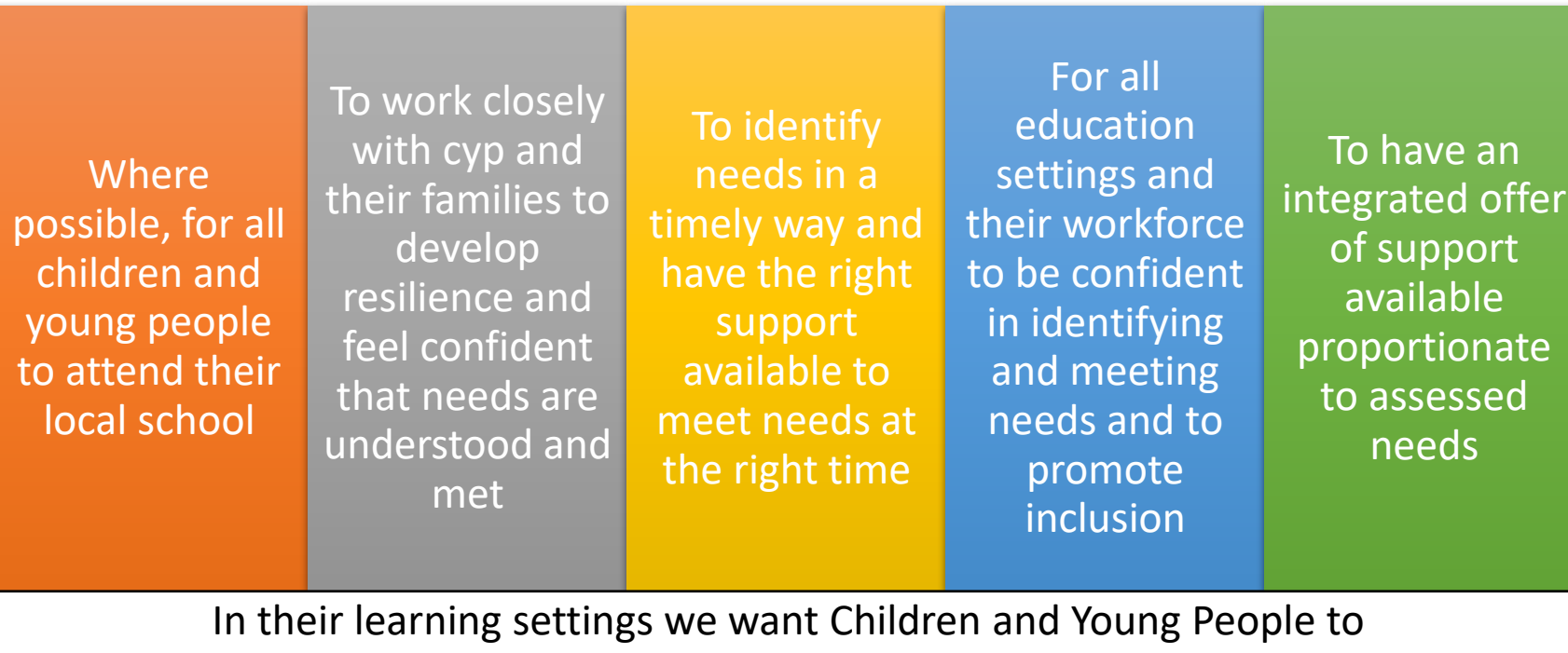
#329066

Select polls

Is the vision clear for parents and carers?

Do you support the vision?

# Aims



Be Present

Participate

Acheive

Belong

Be  
Independent

Please use your phone, or browser and visit

[www.sli.do](http://www.sli.do)

#033617

Select polls

*Are the aims clear for parents and carers?*

*Do you support the aims?*

*Are there things that you would like to see addressed in the aims?*

# What have we done so far....

The vision and aims have been shared for comment with:

- SEND strategic Partnership
- EHIVC managers
- Send and Inclusion staff team
- Special school heads
- Chairs of the Communities of Learning



# Next steps. Proposed timeline

25/03 /21 SEND Strategy steering group to meet and plan full stakeholder engagement across the partnership including survey

April – middle June – stakeholder engagement

25<sup>th</sup> June draft SEND Strategy to Strategic Leadership Group

5<sup>th</sup> July Send Strategic partnership to review Strategy before embarking on governance process

# Next steps: Stakeholder Engagement to include ....

MCT

SENDIASS

CYP groups e.g Extreme

Early years settings

DAPH

DASH

Behaviour Panel Chairs

Social care

Early Help

Health Estate\*

SEND Teams